

PROPOSED APARTMENT SCHEME AT AHMEDABAD

M : 98980 70090

Disclaimer: This drawing and the design/data therein are the property of MANSI SHAH ARCHITECTS. They are merely loaned and will neither be reproduced, copied, loaned, exhibited nor used except in the limited way and private use as permitted by any written consent given by MANSI SHAH ARCHITECTS to the borrower.

Disclaimer: This drawing and the design/data therein are the property of MANSI SHAH ARCHITECTS. They are merely banned and will neither be reproduced, copied, baned, exhibited nor used except in the limited way and private use as permitted by any written consent given by MANSI SHAH ARCHITECTS to the borrower.

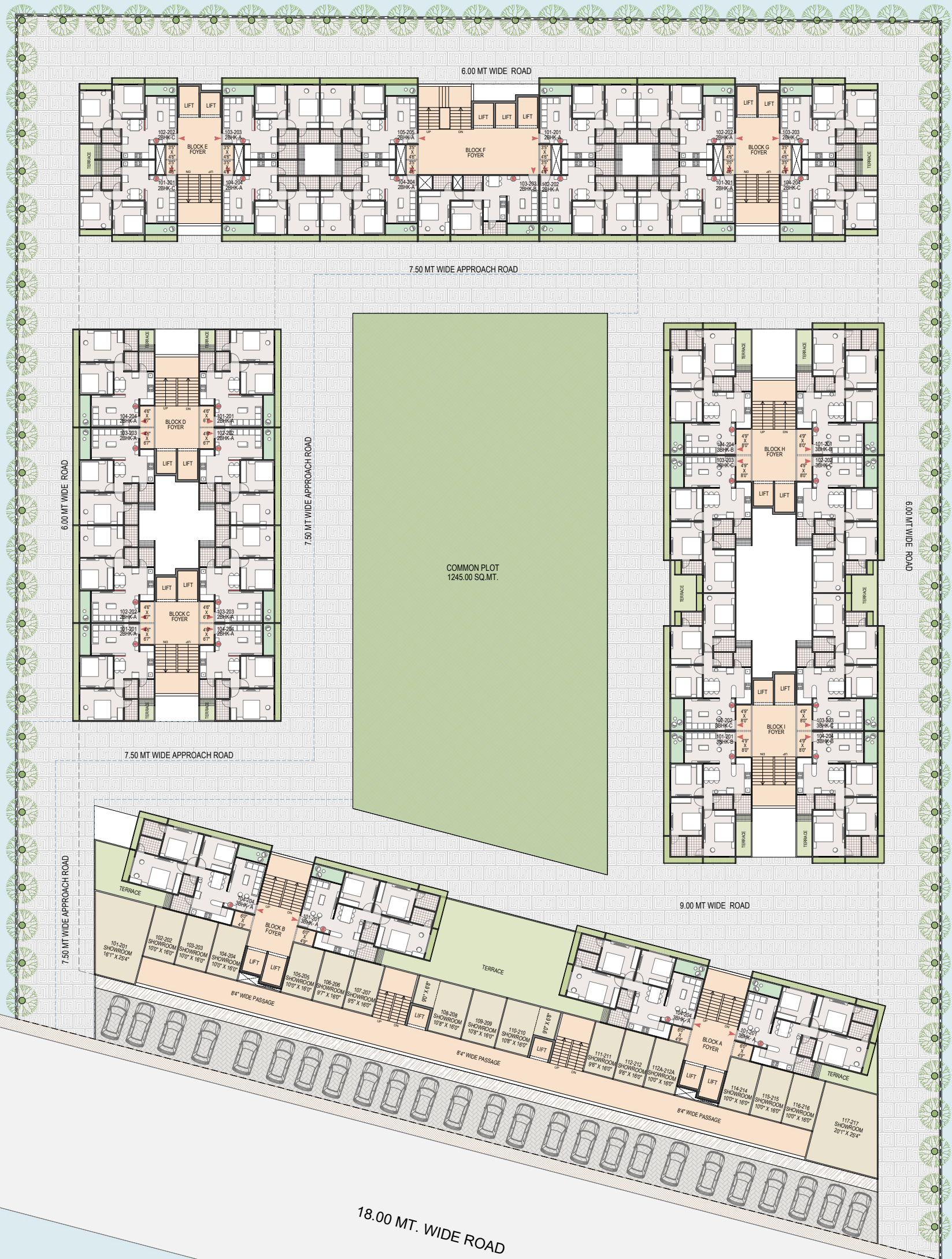


GROUND FLOOR PLAN
PROPOSED APARTMENT SCHEME AT AHMEDABAD

FOR REVIEW
DATE: 07-12-2022
e.studio@mansishah.co.in

mansi shah
ARCHITECTS

Disclaimer: This drawing and the design/data therein are the property of MANSI SHAH ARCHITECTS. They are merely banded and will neither be reproduced, copied, banned, exhibited nor used except in the limited way and private use as permitted by any written consent given by MANSI SHAH ARCHITECTS to the borrower.

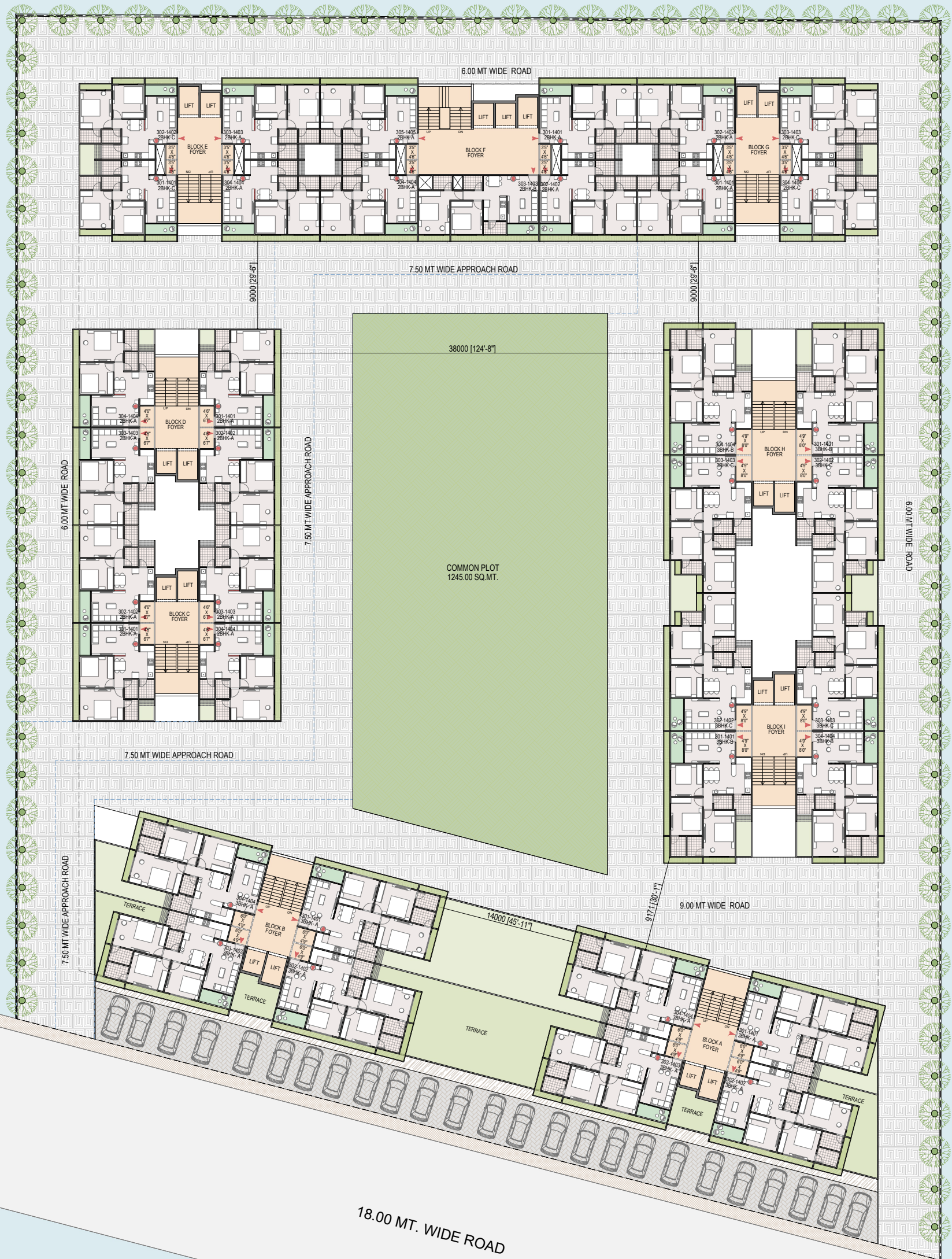


1ST & 2ND FLOOR PLAN
PROPOSED APARTMENT SCHEME AT AHMEDABAD

FOR REVIEW
DATE: 07-12-2022
e:studio@mansishah.co.in

mansi shah
ARCHITECTS

Disclaimer: This drawing and the design/data therein are the property of MANSI SHAH ARCHITECTS. They are merely banded and will neither be reproduced, copied, banned, exhibited nor used except in the limited way and private use as permitted by any written consent given by MANSI SHAH ARCHITECTS to the borrower.

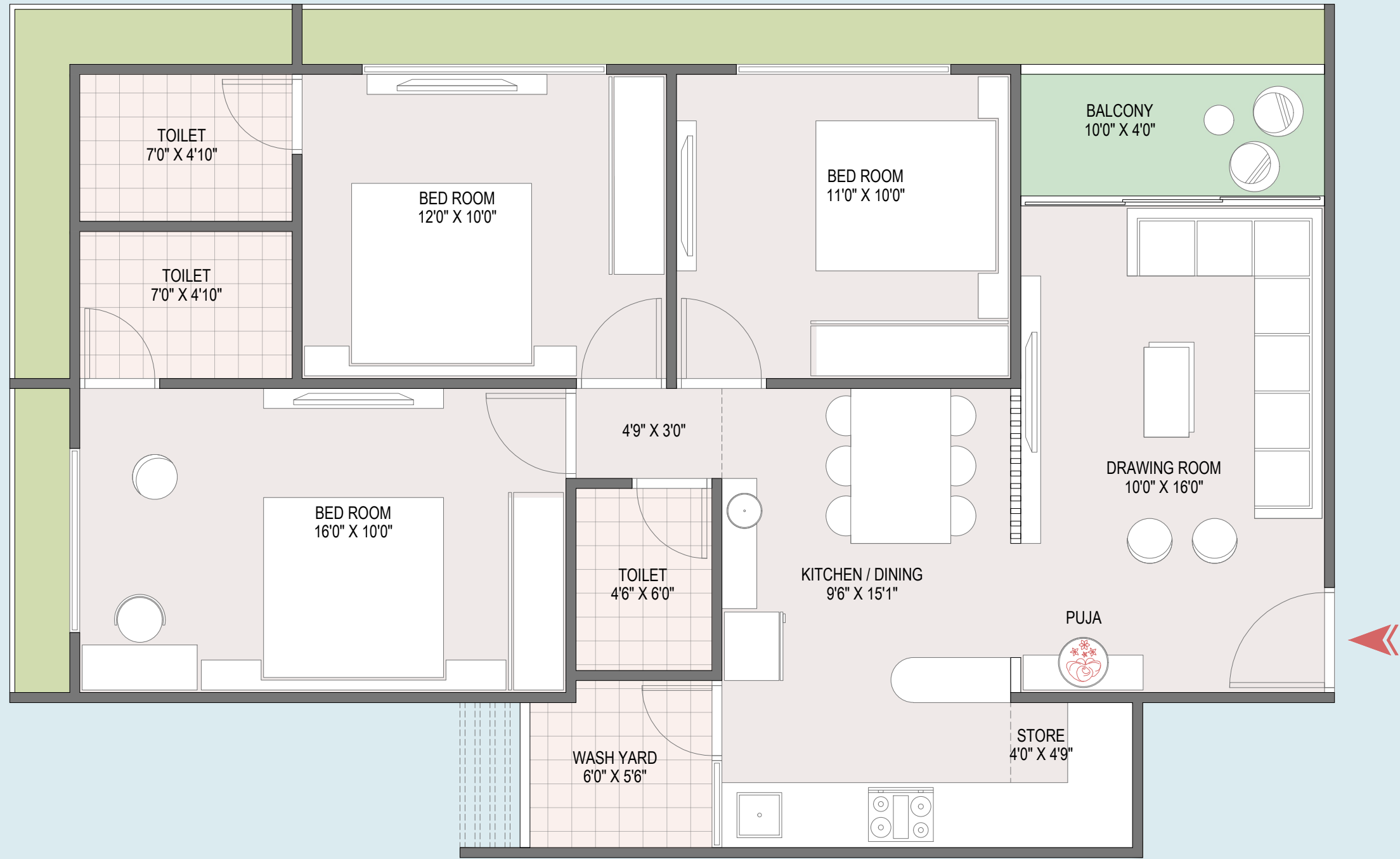


TYPICAL FLOOR PLAN
PROPOSED APARTMENT SCHEME AT AHMEDABAD

FOR REVIEW
DATE: 07-12-2022
e:studio@mansishah.co.in

mansi shah
ARCHITECTS

Disclaimer: This drawing and the design/data therein are the property of MANSI SHAH ARCHITECTS. They are merely loaned and will neither be reproduced, copied, loaned, exhibited nor used except in the limited way and private use as permitted by any written consent given by MANSI SHAH ARCHITECTS to the borrower.



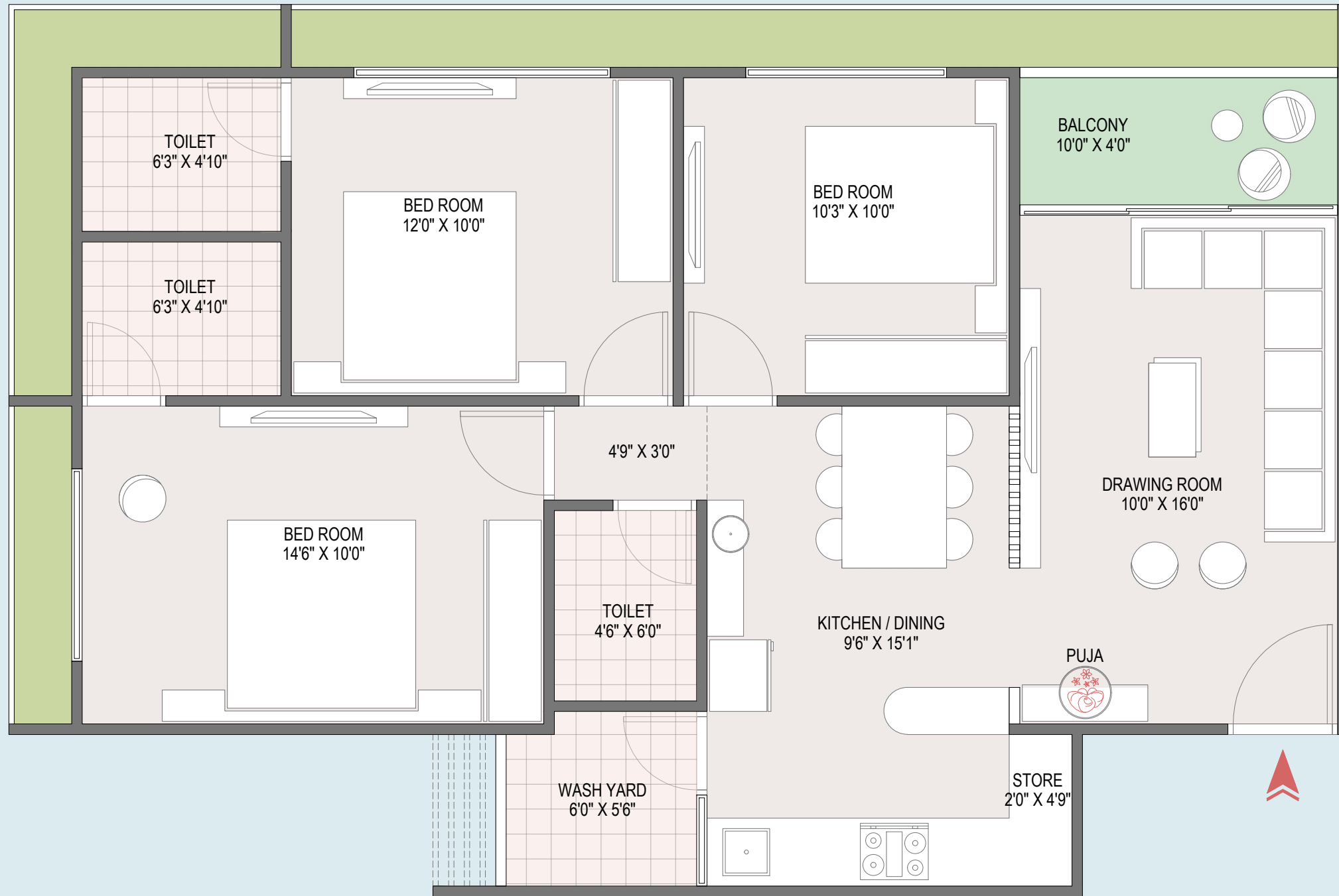
BUILT-UP AREA = 90.00 SQ.MT.

3BHK-A UNIT
PROPOSED APARTMENT SCHEME AT AHMEDABAD

FOR REVIEW
DATE: 07-12-2022
e.studio@mansishah.co.in

mansi shah
ARCHITECTS

Disclaimer: This drawing and the design/data therein are the property of MANSI SHAH ARCHITECTS. They are merely loaned and will neither be reproduced, copied, loaned, exhibited nor used except in the limited way and private use as permitted by any written consent given by MANSI SHAH ARCHITECTS to the borrower.



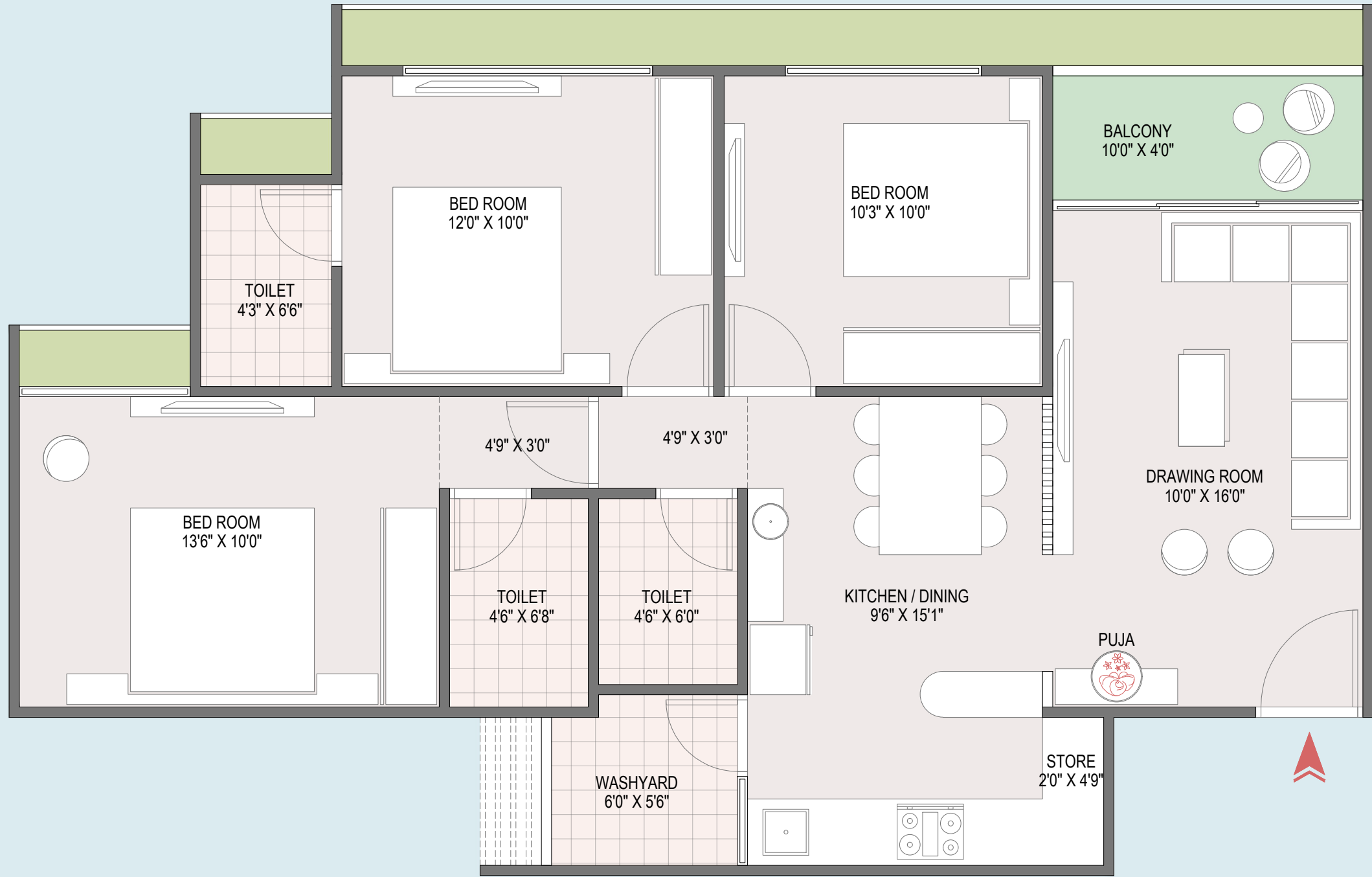
BUILT-UP AREA = 86.24 SQ.MT.

3BHK-B UNIT
PROPOSED APARTMENT SCHEME AT AHMEDABAD

FOR REVIEW
DATE: 07-12-2022
e.studio@mansishah.co.in

mansi shah
ARCHITECTS

Disclaimer: This drawing and the design/data therein are the property of MANSI SHAH ARCHITECTS. They are merely loaned and will neither be reproduced, copied, loaned, exhibited nor used except in the limited way and private use as permitted by any written consent given by MANSI SHAH ARCHITECTS to the borrower.



BUILT-UP AREA = 86.43 SQ.MT.

3BHK-C UNIT
PROPOSED APARTMENT SCHEME AT AHMEDABAD

FOR REVIEW
DATE: 07-12-2022
e.studio@mansishah.co.in

mansi shah
ARCHITECTS

Disclaimer: This drawing and the design/data therein are the property of MANSI SHAH ARCHITECTS. They are merely loaned and will neither be reproduced, copied, loaned, exhibited nor used except in the limited way and private use as permitted by any written consent given by MANSI SHAH ARCHITECTS to the borrower.



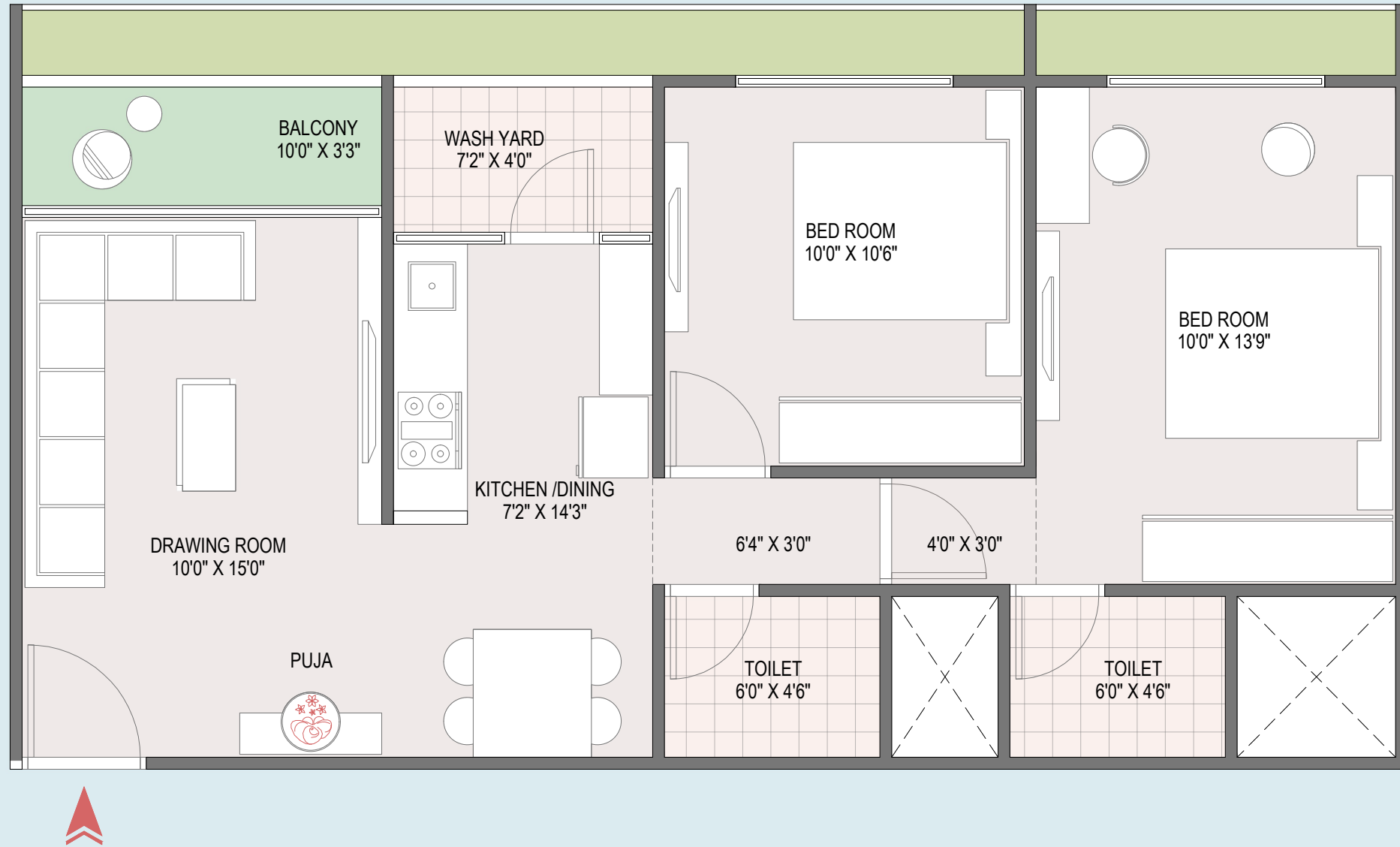
BUILT-UP AREA = 63.15 SQ.MT.

2BHK-A UNIT
PROPOSED APARTMENT SCHEME AT AHMEDABAD

FOR REVIEW
DATE: 07-12-2022
e.studio@mansishah.co.in

mansi shah
ARCHITECTS

Disclaimer: This drawing and the design/data therein are the property of MANSI SHAH ARCHITECTS. They are merely loaned and will neither be reproduced, copied, loaned, exhibited nor used except in the limited way and private use as permitted by any written consent given by MANSI SHAH ARCHITECTS to the borrower.



BUILT-UP AREA = 65.27 SQ.MT.

2BHK-B UNIT
PROPOSED APARTMENT SCHEME AT AHMEDABAD

FOR REVIEW
DATE: 07-12-2022
e.studio@mansishah.co.in

mansi shah
ARCHITECTS

Disclaimer: This drawing and the design/data therein are the property of MANSI SHAH ARCHITECTS. They are merely loaned and will neither be reproduced, copied, loaned, exhibited nor used except in the limited way and private use as permitted by any written consent given by MANSI SHAH ARCHITECTS to the borrower.



BUILT-UP AREA = 61.42 SQ.MT.

2BHK-C UNIT
PROPOSED APARTMENT SCHEME AT AHMEDABAD

FOR REVIEW
DATE: 07-12-2022
e.studio@mansishah.co.in

mansi shah
ARCHITECTS

Disclaimer: This drawing and the design/data therein are the property of MANSI SHAH ARCHITECTS. They are merely loaned and will neither be reproduced, copied, loaned, exhibited nor used except in the limited way and private use as permitted by any written consent given by MANSI SHAH ARCHITECTS to the borrower.


mansi shah
ARCHITECTS
e:studio@mansishah.co.in
1215, Avenue one, Near Shreyas Foundation
Ambawadi, Ahmedabad. 380015