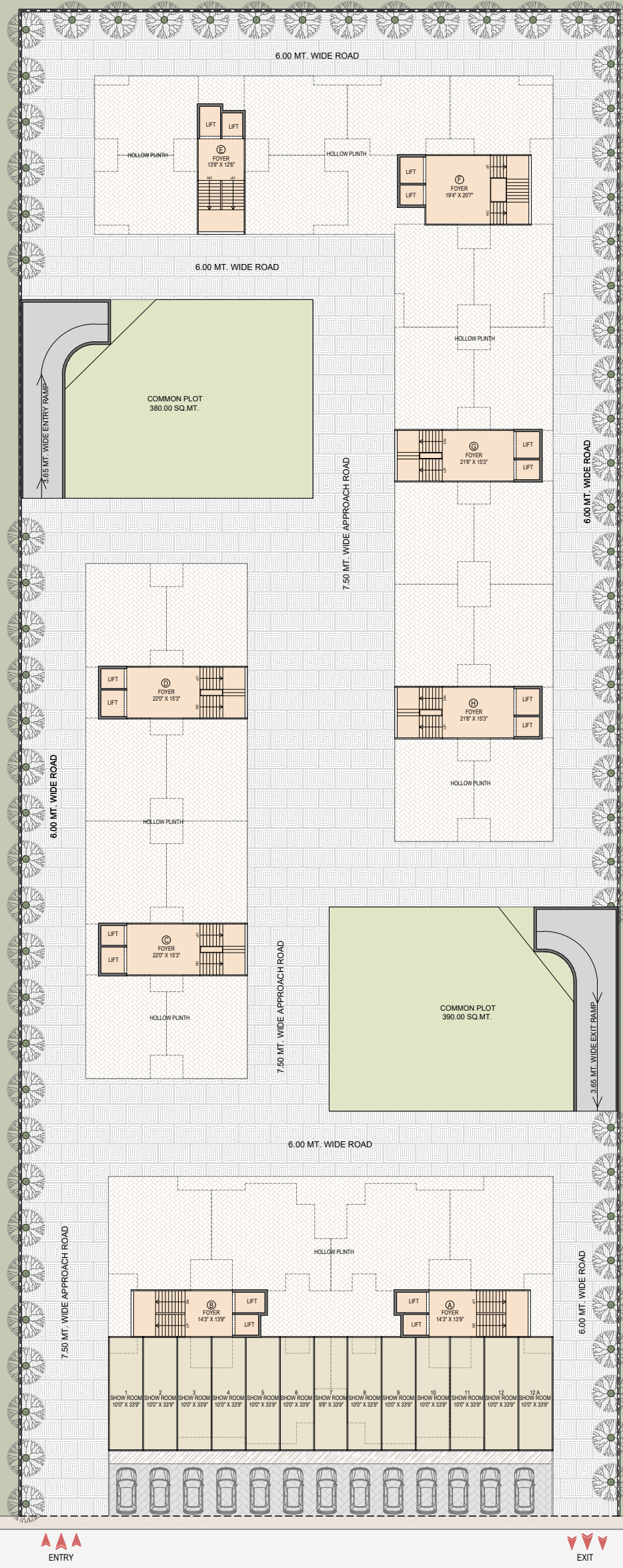


## PROPOSED APARTMENT SCHEME AT AHMEDABAD

Disclaimer: This drawing and the design/data therein are the property of MANSI SHAH ARCHITECTS. They are merely banded and will neither be reproduced, copied, banned, exhibited nor used except in the limited way and private use as permitted by any written consent given by MANSI SHAH ARCHITECTS to the borrower.



▲▲▲  
ENTRY

▼▼▼  
EXIT

18.00 MT. WIDE ROAD

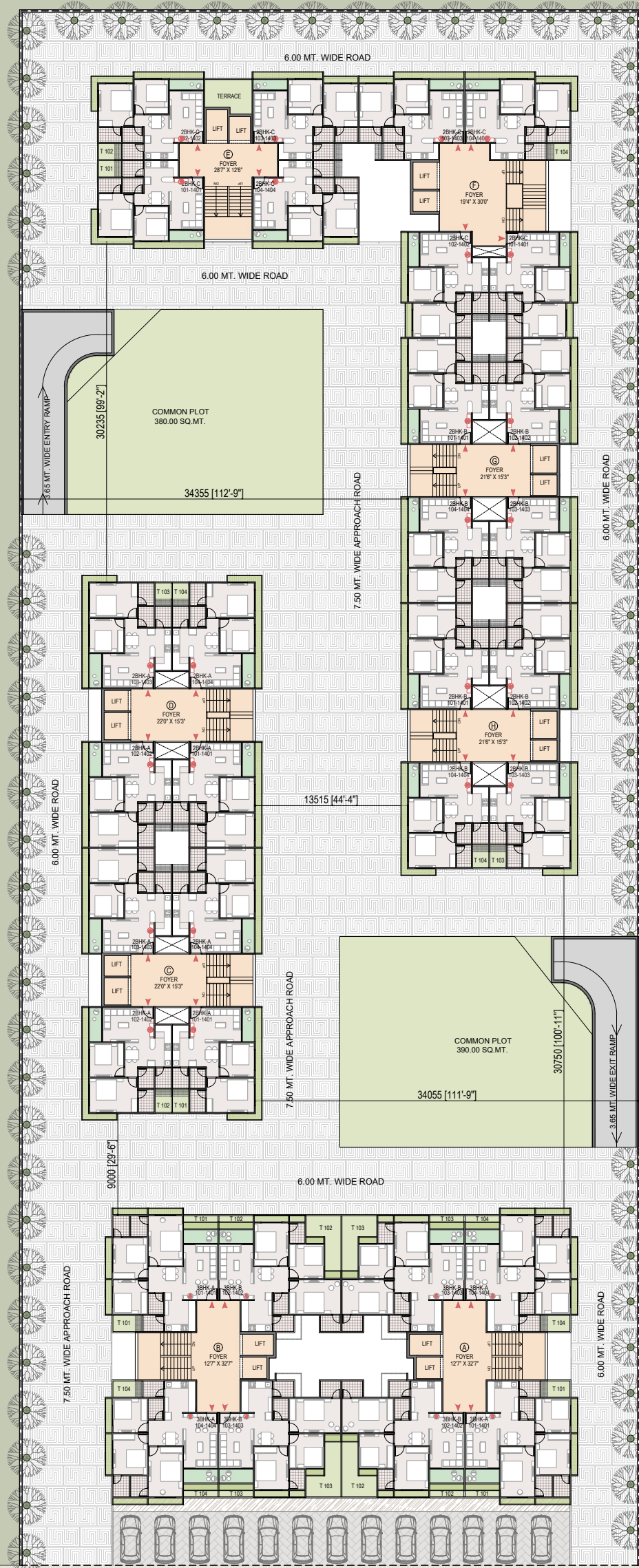


GROUND FLOOR PLAN  
PROPOSED APARTMENT SCHEME AT AHMEDABAD

FOR REVIEW  
DATE: 27-01-2023  
e.studio@mansishah.co.in

**mansi shah**  
ARCHITECTS

Disclaimer: This drawing and the design/data therein are the property of MANSI SHAH ARCHITECTS. They are merely loaned and will neither be reproduced, copied, loaned, exhibited nor used except in the limited way and private use as permitted by any written consent given by MANSI SHAH ARCHITECTS to the borrower.



18.00 MT. WIDE ROAD

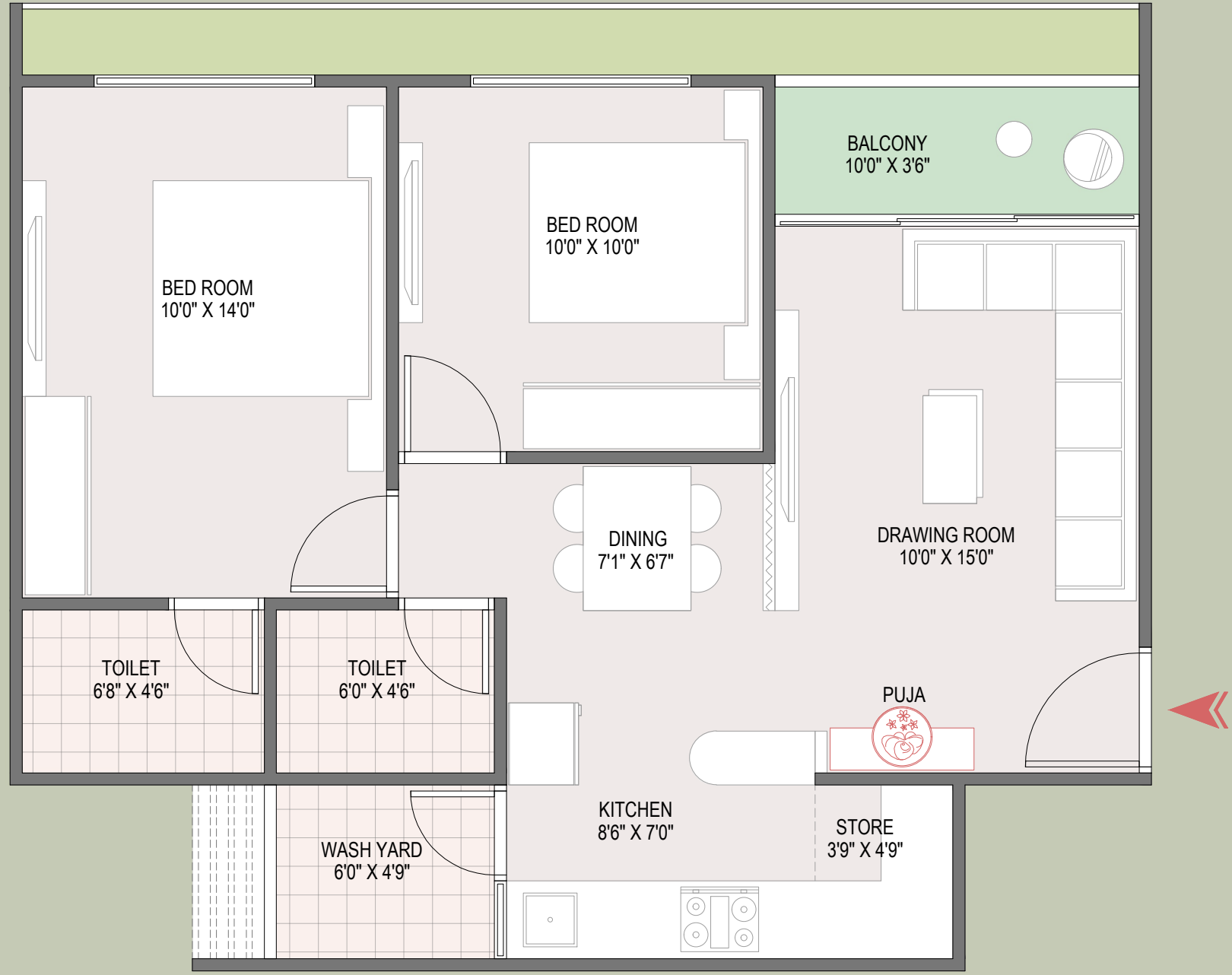


TYPICAL FLOOR PLAN  
PROPOSED APARTMENT SCHEME AT AHMEDABAD

FOR REVIEW  
DATE: 27-01-2023  
e.studio@mansishah.co.in

mansi shah  
ARCHITECTS

Disclaimer: This drawing and the design/data therein are the property of MANSI SHAH ARCHITECTS. They are merely loaned and will neither be reproduced, copied, loaned, exhibited nor used except in the limited way and private use as permitted by any written consent given by MANSI SHAH ARCHITECTS to the borrower.

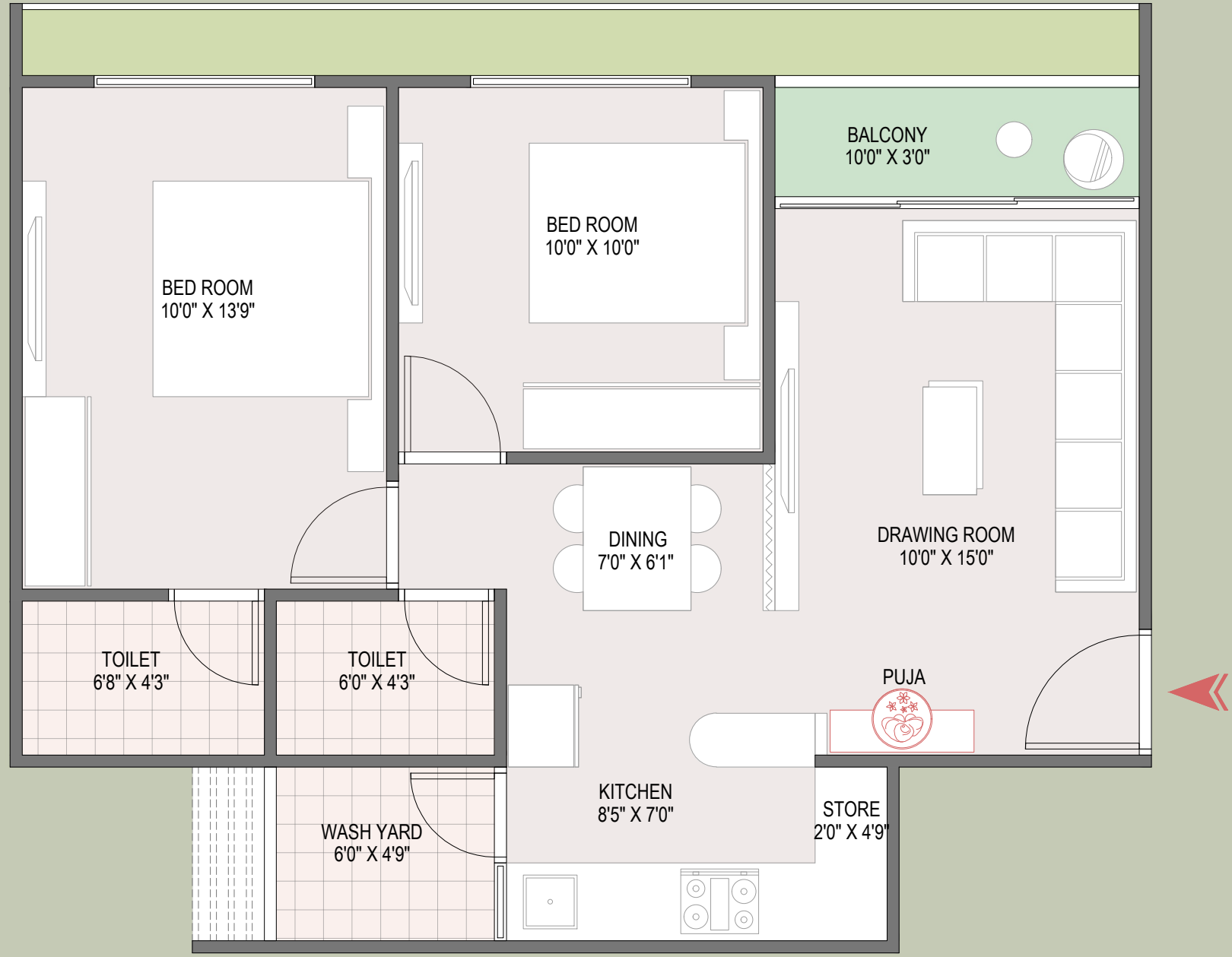


2BHK -A UNIT  
PROPOSED APARTMENT SCHEME AT AHMEDABAD

FOR REVIEW  
DATE: 27-01-2023  
e.studio@mansishah.co.in

**mansi shah**  
ARCHITECTS

Disclaimer: This drawing and the design/data therein are the property of MANSI SHAH ARCHITECTS. They are merely loaned and will neither be reproduced, copied, loaned, exhibited nor used except in the limited way and private use as permitted by any written consent given by MANSI SHAH ARCHITECTS to the borrower.

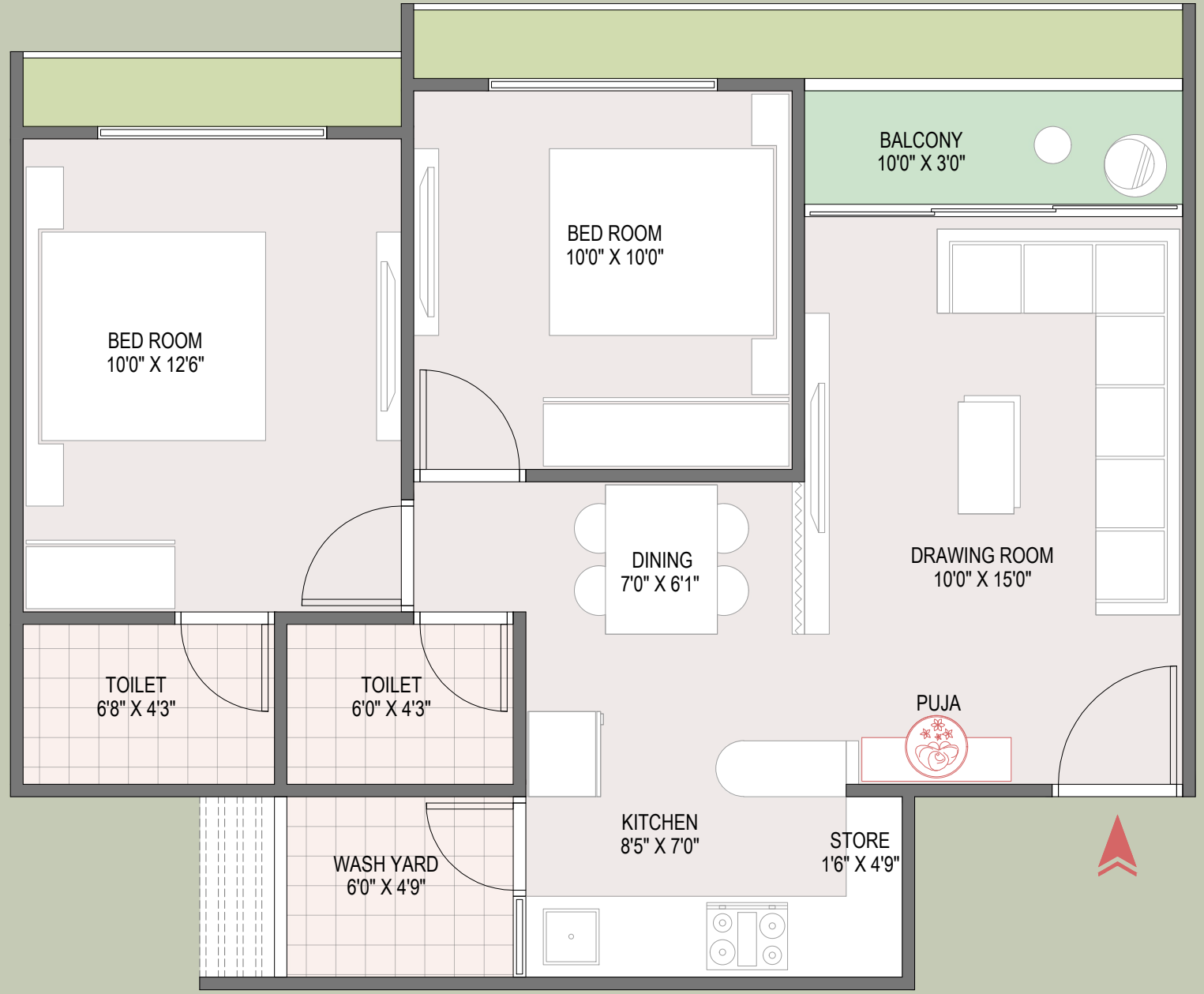


2BHK -B UNIT  
PROPOSED APARTMENT SCHEME AT AHMEDABAD

FOR REVIEW  
DATE: 27-01-2023  
e.studio@mansishah.co.in

**mansi shah**  
ARCHITECTS

Disclaimer: This drawing and the design/data therein are the property of MANSI SHAH ARCHITECTS. They are merely loaned and will neither be reproduced, copied, loaned, exhibited nor used except in the limited way and private use as permitted by any written consent given by MANSI SHAH ARCHITECTS to the borrower.



2BHK -C UNIT  
PROPOSED APARTMENT SCHEME AT AHMEDABAD

FOR REVIEW  
DATE: 27-01-2023  
e.studio@mansishah.co.in

**mansi shah**  
ARCHITECTS

Disclaimer: This drawing and the design/data therein are the property of MANSI SHAH ARCHITECTS. They are merely loaned and will neither be reproduced, copied, loaned, exhibited nor used except in the limited way and private use as permitted by any written consent given by MANSI SHAH ARCHITECTS to the borrower.



3BHK-A UNIT  
PROPOSED APARTMENT SCHEME AT AHMEDABAD

FOR REVIEW  
DATE: 27-01-2023  
e.studio@mansishah.co.in

**mansi shah**  
ARCHITECTS

Disclaimer: This drawing and the design/data therein are the property of MANSI SHAH ARCHITECTS. They are merely loaned and will neither be reproduced, copied, loaned, exhibited nor used except in the limited way and private use as permitted by any written consent given by MANSI SHAH ARCHITECTS to the borrower.



3BHK-B UNIT  
PROPOSED APARTMENT SCHEME AT AHMEDABAD

FOR REVIEW  
DATE: 27-01-2023  
e.studio@mansishah.co.in

**mansi shah**  
ARCHITECTS



Disclaimer: This drawing and the design/data therein are the property of MANSI SHAH ARCHITECTS. They are merely loaned and will neither be reproduced, copied, loaned, exhibited nor used except in the limited way and private use as permitted by any written consent given by MANSI SHAH ARCHITECTS to the borrower.

**mansi shah**  
ARCHITECTS

e:studio@mansishah.co.in  
1215, Avenue one, Near Shreyas Foundation  
Ambawadi, Ahmedabad. 380015